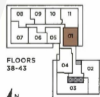


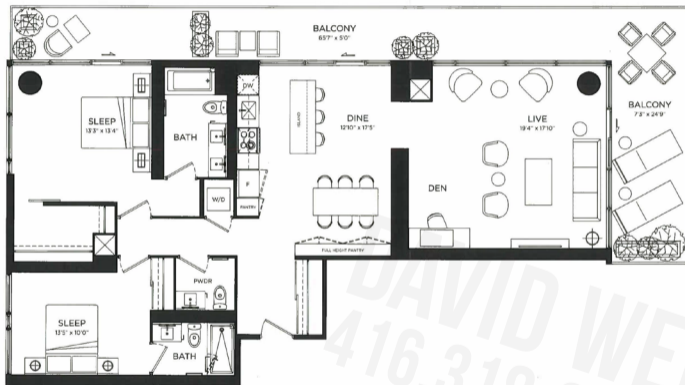
## STELLA

TWO BEDROOM + MEDIA  
TWO BATH  
SUITE: 834 SQ FT  
BALCONY: 220 SQ FT



# CAVALLI

TWO BEDROOM + DEN  
TWO + HALF BATH  
SUITE: 1482 SQ FT  
BALCONY: 463 SQ FT

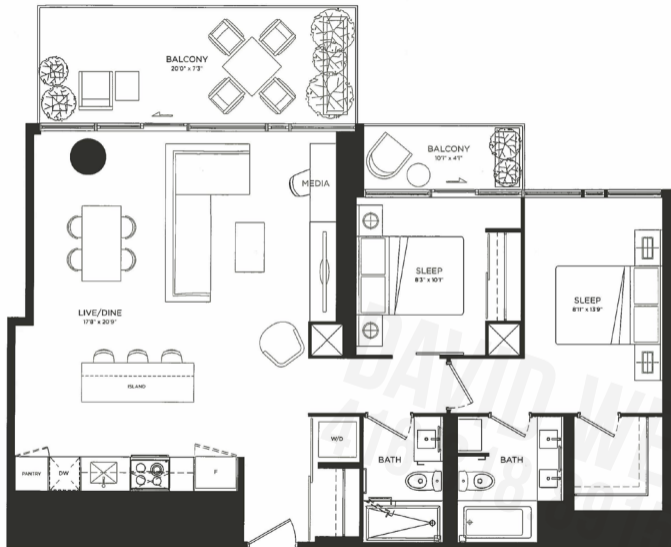


DAVID WEI  
416.318.8915



# VALENTINO

TWO BEDROOM + MEDIA  
TWO BATH  
SUITE: 1020 SQ FT  
BALCONY: 182 SQ FT

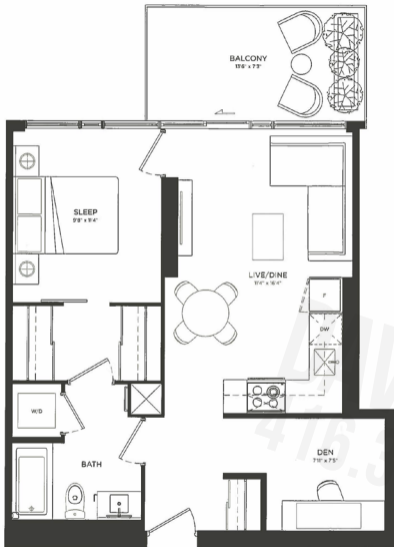


FLOORS  
38-43

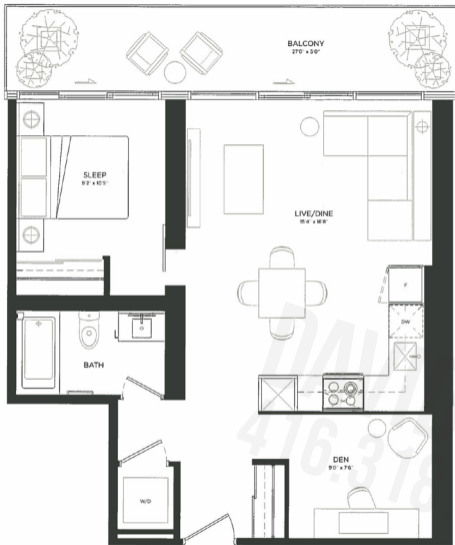
4 N

# CHOO

ONE BEDROOM + DEN  
ONE BATH  
SUITE: 674 SQ FT  
BALCONY: 96 SQ FT

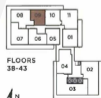


DAVID WEI  
415.318.8915



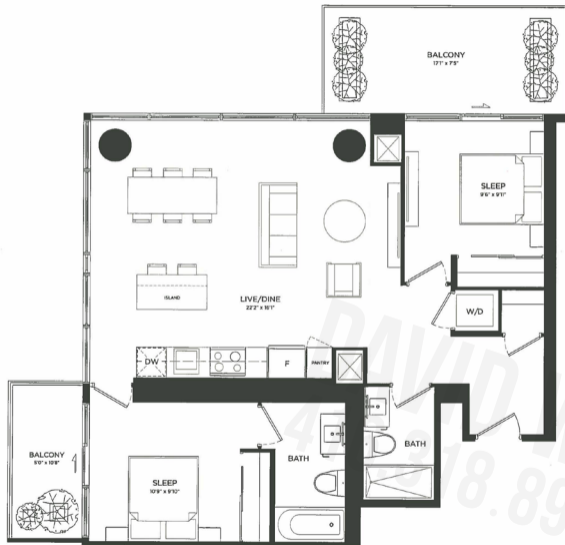
## LAUREN

ONE BEDROOM + DEN  
ONE BATH  
SUITE: 665 SQ FT  
BALCONY: 135 SQ FT



# VUITTON

TWO BEDROOM  
TWO BATH  
SUITE: 946 SQ FT  
BALCONY: 179 SQ FT



FLOORS  
3B-43

4 N

T W E N T Y  
**LOMBARD**  
 Y O N G E + R I C H

PRICE LIST  
 FLOOR 38 to 42

SUITE	TYPE	LEVELS	APPROX. SUITE SIZE	EXPOSURE	PRICING FROM:
Lauren (1P)	1 Bedroom + Den/1 bath	42	665 sf	North	\$673,990
Choo (1P)	1 Bedroom + Den/1 bath	42	674 sf	South	\$733,990
Stella (1P)	2 Bedroom + Media/2 bath	41	834 sf	East	\$779,990
Stella (1P)	2 Bedroom + Media/2 bath	42	834 sf	East	\$817,990
Vuitton (1P)	2 Bedroom/2 bath	42	946 sf	North-East	\$899,990
Valentino (1P)	2 Bedroom/2 bath	39	1,020 sf	West	\$913,990
Cavalli (2P)	2 Bedroom + Den/2.5 bath	39	1,482 sf	South-East	\$1,383,990
Cavalli (2P)	2 Bedroom + Den/2.5 bath	40	1,482 sf	South-East	\$1,391,990

Premiums apply to floors, balconies and views.

Deposit Structure	International Deposit Structure	Maintenance
<p><b>20% Total</b>            \$7,500 with signing of Agreement            Balance of 5% in 30 days            2.5% in 90 days            2.5% in 180 days            5% in 365 days            5% on Occupancy</p> <p><b>Taxes</b>            Estimated at approximately 1% of purchase price</p>	<p><b>36% total</b>            \$5,000 with signing of Agreement            Balance of 10% in 15 days            10% in 60 days            5% in 180 days            5% in 390 days            5% in 540 days            1% on Occupancy</p> <p><b>Tentative Occupancy Date</b>            December, 2020</p>	<p>\$0.56 per square foot            Hydro metered separately            Parking Maintenance fee - \$ 60/month            Locker Maintenance fee - \$25/month</p> <p><b>Prices quoted include Parking</b></p> <p><b>Locker - \$6,000</b></p> <p>All prices quoted include HST</p>

Note: All areas and stated room dimensions are approximate. Floor area measured in accordance with Tarion Bulletin #22. Actual living area will vary from floor area stated. \*Please see a Sales Representative for details. Subject to availability. Premiums apply to floors, balconies and views. Pricing above is subject to change without notice. January 31, 2017.

Century 21  
 KING & QUAY REAL ESTATE INC.  
 Brokerage®  
 7300 Warden Ave. Ste. 401,  
 Markham, ON L3R 9Z5

**DAVID WEI**  
 SALES REP. MBA  
 TOP 1% OF AGENTS NATIONWIDE

● www.condoweb.ca  
 ● buydreamhome@gmail.com

416.318.8915

Century 21  
 KING & QUAY REAL ESTATE INC.  
 Brokerage®  
 7300 Warden Ave. Ste. 401,  
 Markham, ON L3R 9Z5

**DAVID WEI**  
 獨家銷售 (REALTOR SALES REPRESENTATIVE)

Cell: (416) 318-8915  
 Bus: (905) 940-3428 (ext.)  
 Fax: (905) 940-0283

Working With Pro

买房·造房  
 【您可以信赖的地产专家】

wechat 扫描  
 ID: contact0123



GREAT GULF

Baker  
 Real Estate  
 Incorporated